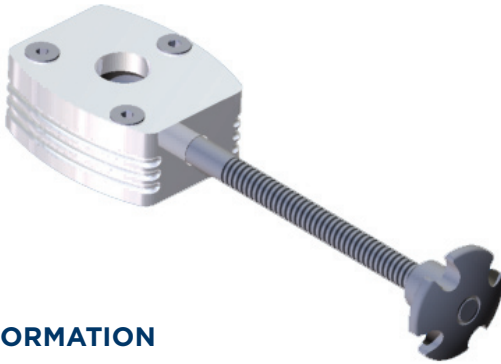


THE FILLAUER WRIST LOCK

Fillauer has created the smallest, lightest shuttle pin lock available. Weighing less than 2oz. and only 1/4 inches thick, the Fillauer Wrist Lock is the perfect lock for upper extremity patients using locking liners. Its precision machining and durable all metal construction ensure years of trouble free operation. The positive locking plungers (pins) for this lock are available in 1" & 1.5" lengths for liners with 6mm and 10mm threads 1/4x20 5-10".



ORDERING INFORMATION

Wrist Lock Assembly:

125415	Wrist Lock with Lamination Ring
	Assembly Includes:
809811	Upper Housing
809809	Lower Housing
882401	M2 x .4 x 8mm FHCS
809760	Compression Spring
809816	Shuttle Lock
809729	Latch Pin Button for Lock Systems
809775	Latch Button

Plungers: (sold separately)

809826	Plunger 1", with 1/4" Thread
809827	Plunger 1.5", with 1/4" Thread
809826mm	Plunger 1", with M 10 Metric Thread
809827mm	Plunger 1.5", with M 10 Metric Thread

Fabrication Kits: (sold separately)

125215	Fabrication Kit for Lamination
	Kit Includes:
141191	Distal Attach Dummy
141193	Pin Location Dummy
141198	Lamination Dummy Rod
883301	O-Rings

Features & Benefits

- Smallest, lightest shuttle lock available
- Strong and durable all metal construction
- Excellent choice for pediatric, long B/E or W/D patients
- Works well for laminated sockets or thermoformed liners
- Plungers (pins) available in sizes to fit all liners
- Reusable fabrication kit available

Fillauer LLC

1-800-251-6398 • www.fillauer.com

Hosmer

1-800-827-0070 • www.hosmer.com

Centri®

+46 8 505 332 00 • www.centri.se

AD268 08-09