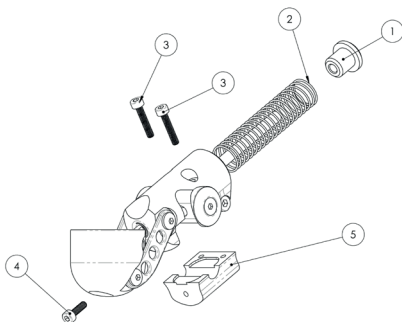


INSTRUCTIONS FOR REPLACEMENT KIT

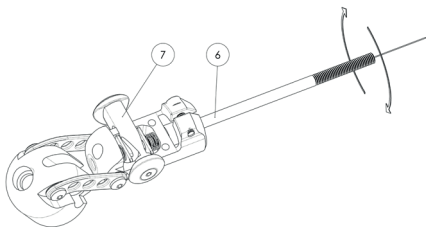
Step 1:

Remove the lift assist adjustment nut (1) and lift assist spring (2). Then remove screws (3) and (4) so that the lid (5) can be removed.



Step 2:

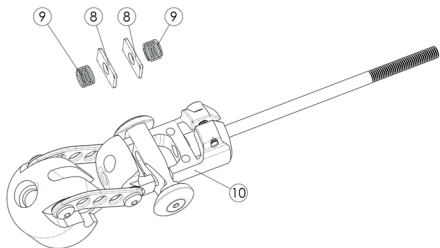
Unscrew the Lock rod (6) and pull it out so that it goes clear of the Slide lock assembly (7) lock plates and springs (8).



Step 3:

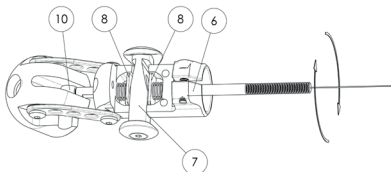
Use a pair of tweezers to remove the lock plates (8) and springs (9). Insert the parts from Replacement kit 631028351 instead.

A pair of tweezers will help you reinsert the lock plates. Use the same tweezers to insert the compressed springs into the elbow tube clamp housing (10).



Step 4:

Reinsert the Lock rod (6) through the unit and reattach to the brass Lock rod seat (10). Apply a small amount of Loctite 243, or similar, to the thread if needed.



Step 5:

Reattach the parts removed in Step 1. Test the functionality and motion of the elbow before reattaching to the prosthesis. Apply some low viscosity lubricant to the lock rod if needed.