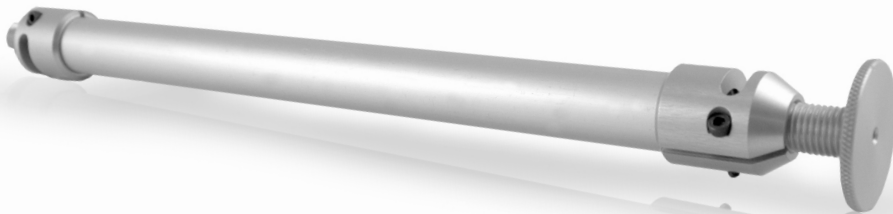


# EndoArm System

---

Product Sheet



*Fillauer*®

# EndoArm

The EndoArm system offers a modular solution for passive transradial prostheses. With its adjustable friction/ flexion/ rotation wrist, the user can easily re-position the hand for optimization of his/ her task. The system comes with a 20 mm aluminum tube that can be cut to the right length and all the connectors you need to fabricate a standard transradial passive prostheses. Complete the kit with an inner hand, cosmetic glove and cosmetic foam to create a high end prosthesis that exceeds your clients' needs.

## Specifications

Length	2.4 - 12.6 in. ( 60 - 320 mm)
Weight at Maximum Length	5.2 oz. (148 g)
Material	Aluminum
Warranty	12 months

## Product Features

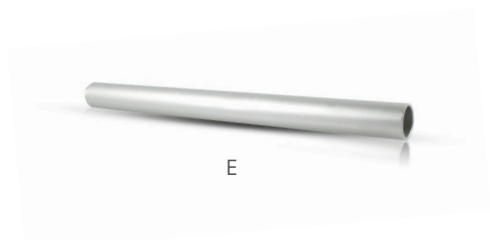
- Adjustable flexion/friction/ rotation wrist
- 20 × 250 mm aluminum tube

## EndoArm Kits

Product Number	Description
<b>A - 631028402</b>	EndoArm kit with lamination adapter
Includes	Tube clamp, external thread M12 × 1,5 mm, aluminum Lamination adapter, aluminum 20 × 250 mm aluminum tube Tube clamp, internal thread M12 × 1,5 mm aluminum
<b>B - 631028401</b>	EndoArm kit with wrist
Includes	Tube clamp, external thread M12 × 1,5 mm aluminum Flexion/ rotation/ friction wrist, aluminum and POM 20 × 250 mm aluminum tube Tube clamp, internal thread M12 × 1,5 aluminum

## EndoArm Spare Parts

	Product Number	Description
A	<b>631028300</b>	EndoArm wrist
B	<b>631028340</b>	EndoArm tube clamp, external thread M12 × 1,5 mm
B	<b>631028310</b>	EndoArm tube clamp, external thread 1/2 - 20"
C	<b>631028320</b>	EndoArm lamination adapter
D	<b>631028341</b>	EndoArm tube clamp, internal thread M12 × 1,5 mm
D	<b>631028311</b>	EndoArm tube clamp, internal thread 1/2 - 20"
E	<b>631028330</b>	EndoArm tube 250 × 20 mm



# EndoArm Elbow

The EndoArm Elbow provides a revolutionary modular solution for passive transhumeral prostheses. The Elbow offers the patient infinite locking positions over its 150° ROM along with its adjustable lift assist.

## Specifications

Length	5.5 in. (140 mm)
Weight	4.6 oz. (132 g)
Load	8 kg at hand
Warranty	12 months

## Product features

- Shortening of the forearm when flexing the elbow to reduce the wear on the cosmetic foam covering the finished prosthetic
- The elbow unit will be delivered with the lock slide set so the elbow can be locked by pressing the button from the lateral side. This can be changed in the workshop if needed
- The proximal attachment features a M12\*1.5mm internal thread or using a M8 bolt attachment to the socket (M8 bolt not included)
- The distal attachment is a 20mm tube clamp, standard to our EndoArm Tube. Please note that this tube cannot be shorter than 65mm due to the lift assist
- Complete modularity with our other EndoArm Products

## Instructions

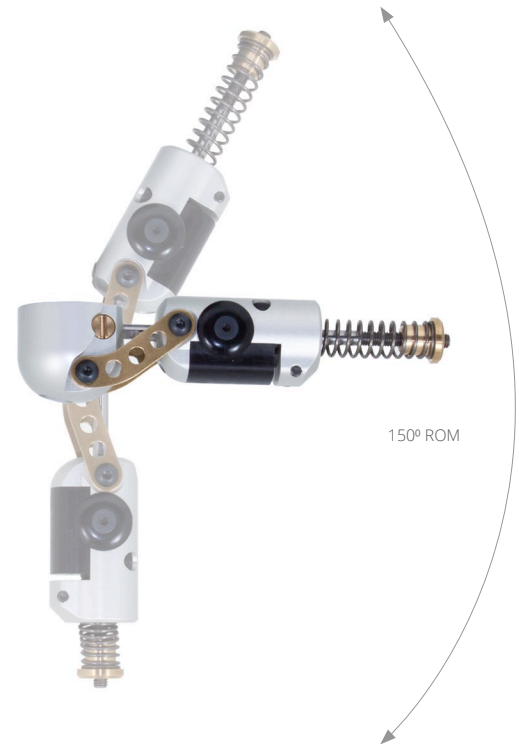
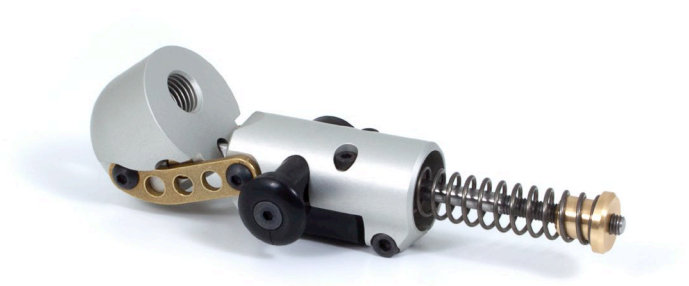
- Tighten or loosen the brass lift assist adjustment nut to increase or decrease the lift assist needed
- Tighten the bolt M4x18 bolt at the tube clamp to approximately 2Nm and apply a suitable thread lock before final delivery

## Order information

Description	Product Number
EndoArm Elbow, Left	631028349
EndoArm Elbow, Right	631028350

## Replacement Parts

Description	Product Number
Lock Plate × 2 and Lock Rod	631028351



# Shoulder Flexion Abduction Joint

The Shoulder Flexion Abduction Joint allows for independent adjustment of friction for both flexion and abduction, providing precise and customizable movement control.

## Specifications

Product Weight	9 oz. (255 g)
Warranty	12 months

## Order Information

Description	Product Number
Shoulder Flexion Abduction Joint	<b>55136</b>



*Fillauer*®

**Fillauer LLC**

2710 Amnicola Highway  
Chattanooga, TN 37406  
423.624.0946

PAE146-EndoArm-System  
2018-01-31/09-19-24