

Endo-Arm System

Product Sheet

Fillauer[®]

Endo-Arm



The Endo-arm system offers a modular solution for passive transradial prostheses. With its adjustable friction/ flexion/ rotation wrist, the user can easily re-position the hand for optimization of his/ her task. The system comes with a 20 mm aluminum tube that can be cut to the right length and all the connectors you need to fabricate a standard transradial passiv prostheses. Complete the kit with an inner hand, cosmetic glove and cosmetic foam to create a high end prosthesis that exceeds your clients' needs.

Specifications

Length: 2.4 - 12.6 in. (60 - 320 mm)

Weight at Maxium Length: 5.2 oz. (148 g)

Material: Aluminum

Warranty: 12 month

Product Features

- Adjustable flexion/friction/ rotation wrist
- 20 x 250 mm aluminum tube

Order information Endo-Arm Kits

PRODUCT NUMBER	DESCRIPTION
A - 631 028402	Endo-arm kit with lamination adapter
Includes	<ul style="list-style-type: none"> • Tube clamp, external thread M12 x 1,5 mm, aluminum • Lamination adapter, aluminum • 20 x 250 mm aluminum tube • Tube clamp, internal thread M12 x 1,5 mm aluminum
B - 631028401	Endo-arm kit with wrist
Includes	<ul style="list-style-type: none"> • Tube clamp, external thread M12 x 1,5 mm aluminum • Flexion/ rotation/ friction wrist, aluminum and POM • 20 x 250 mm aluminum tube • Tube clamp, internal thread M12 x 1,5 aluminum

Order information Endo-Arm Spare Parts

PRODUCT NUMBER	DESCRIPTION
A - 631028300	Endo-arm wrist
B - 631028340	Endo-arm tube clamp, external thread M12 x 1,5 mm
B - 631028310	Endo-arm tube clamp, external thread 1/2 - 20"
C - 631028320	Endo-arm lamination adapter
D - 631028341	Endo-arm tube clamp, internal thread M12 x 1,5 mm
D - 631028311	Endo-arm tube clamp, internal thread 1/2 - 20"
E - 631028330	Endo-arm tube 250 x 20 mm



Endo-Arm Elbow

The EndoArm Elbow provides a revolutionary modular solution for passive transhumeral prostheses. The Elbow offers the patient infinite locking positions over its 150° ROM along with its adjustable lift assist.

Specifications

Length: 5.5 in. (140 mm)

Weight: 4.6 oz. (132 g)

Load: 8 kg at hand

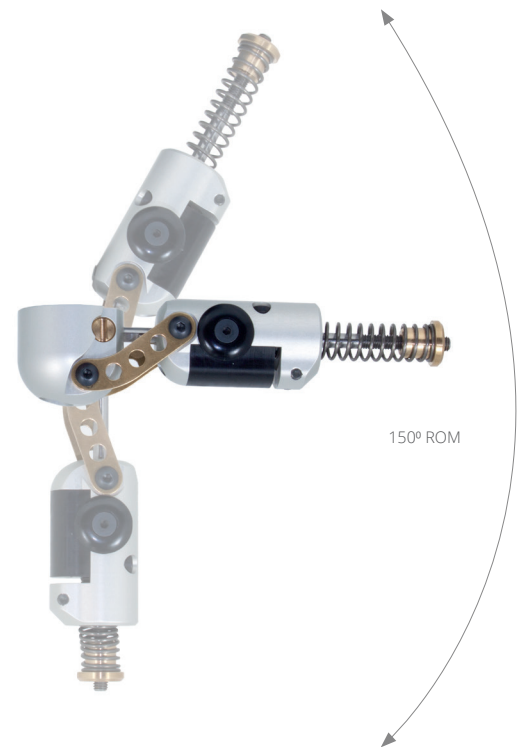
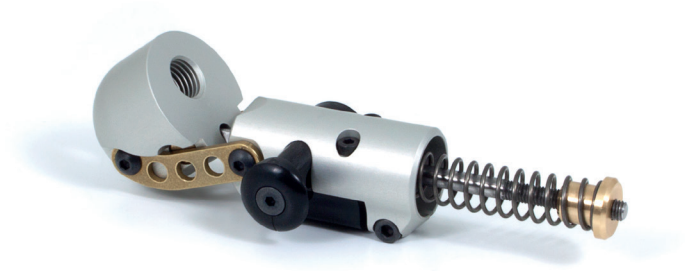
Warranty: 12 month

Product features

- Shortening of the forearm when flexing the elbow to reduce the wear on the cosmetic foam covering the finished prosthetic
- The elbow unit will be delivered with the lock slide set so the elbow can be locked by pressing the button from the lateral side. This can be changed in the workshop if needed
- The proximal attachment features a M12*1.5mm internal thread or using a M8 bolt attachment to the socket (M8 bolt not included)
- The distal attachment is a 20mm tube clamp, standard to our EndoArm Tube. Please note that this tube cannot be shorter than 65mm due to the lift assist
- Complete modularity with our other EndoArm Products

Instructions

- Tighten or loosen the brass lift assist adjustment nut to increase or decrease the lift assist needed
- Tighten the bolt M4x18 bolt at the tube clamp to approximately 2Nm and apply a suitable thread lock before final delivery



Order information Endo-Arm Elbow

DESCRIPTION	PRODUCT NUMBER
EndoArm Elbow, Left	631028349
EndoArm Elbow, Right	631028350

Order information Spare Parts

DESCRIPTION	PRODUCT NUMBER
Lock Plate x 2 and Lock Rod	631028351
EndoArm Lock Side Button	631028352

Fillauer Europe

Kung Hans Väg 2
192 68 Sollentuna, Sweden
+46 8 505 332 00



Fax +46 8 505 332 05
PAE146-EndoArm-System-2018-01-31