

do more

taskaprosthetics.com



10 Nelson Street, Riccarton, Christchurch 8011, New Zealand.



EMERGO EUROPE
Prinsessegracht 20
2514 AP The Hague
Netherlands

Appropriate Use Guidelines

TASKA HandGen1, Gen2
Medium (7¾") & Large (8¼") V2.2



Precision myoelectric components, designed and assembled in New Zealand.



 **TASKA™**

Appropriate use guidelines for the TASKA Hand

Your TASKA Hand is waterproof, dustproof, and the most durable hand on the market.

We want you to have the best possible experience when using your TASKA Hand. These guidelines describe:

- Appropriate use of your TASKA Hand
- Instructions for battery charging
- Uses that may invalidate the warranty
- Specific activities you might want to do with your TASKA Hand
- Safety precautions to avoid damaging your TASKA Hand and harming yourself or others.

Please read and follow these guidelines carefully. We are confident that if you follow them, your TASKA Hand will help you to achieve more, all day and every day. Failure to follow these guidelines may result in damage to your hand, harm to yourself or others, and the warranty becoming invalid. If you are unsure whether a particular activity is appropriate for your TASKA Hand, ask your clinician or contact us at support@taskaprosthetics.com.

do more

Your TASKA Hand



TASKA™

* Quick Disconnect Wrist TASKA HandGen2 only. ** see website for compatibility.

Examples of appropriate use

Your TASKA Hand can be used for a wide range of Activities of Daily Living (ADL) (please refer to the **Limits of use section for further information on the limits for these activities**), for example:

- Activities that involve getting your hands wet or putting them in water for a short time:
 - washing hands
 - washing dishes
 - washing a vehicle
 - walking in the rain
 - using a garden hose.
- Activities that involve some hand vibration:
 - using motorised garden tools such as lawn mowers, hedge trimmers, and line trimmers
 - using small to medium electric power tools such as drills, light-duty saws, and angle grinders.
- Activities that put some strain on the hand:
 - light garden duties
 - carrying a suitcase
 - low-impact workshop activities
 - low-intensity sporting activities.

do more

■ Normal daily activities:

- eating and drinking
- picking up small objects with precision
- shaking hands
- using electronics such as mobile devices, computer mice, keyboards, and cameras
- dressing
- household tasks such as cleaning, vacuuming, ironing, and bedmaking
- driving a vehicle
- and much more.

Examples of inappropriate use

Your TASKA Hand is not designed to be used for activities that involve a lot of vibration, impact, or force to the hand. If you use your TASKA Hand while doing the following activities, you may invalidate the warranty:

- using high-impact tools such as hammers, impact wrenches, or hammer drills
- using heavy-duty machinery such as chain saws and reciprocating saws
- deliberately hitting the hand against hard surfaces
- weightlifting
- high-intensity, adventure, or contact sports.

Using firearms

▲ Do not use your TASKA Hand to operate firearms.



do more

Installation



Your TASKA Hand must be installed by a trained and certified clinician.

Limits of use

Using your TASKA Hand outside the following limits could cause damage that the warranty will not cover. Please see the TASKA Warranty for further details on the standard warranty.

Driving vehicles

Before operating any vehicle with your TASKA Hand, make sure you are legally allowed to operate the vehicle with a prosthesis. You must obey local regulations when using vehicles, aircraft, sailing vessels or any other form of motorised transport while using your TASKA Hand. Please talk to your clinician for further details.

If you use your TASKA Hand while operating a vehicle:

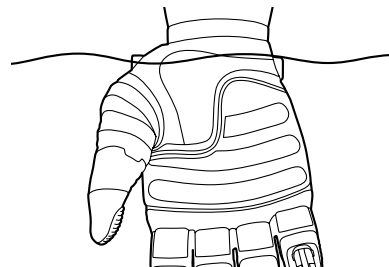
- ▲ Use an open, static grip so that it does not accidentally close on a control.
- ▲ Do not use your TASKA Hand to operate safety-related controls such as a brake.

Water immersion

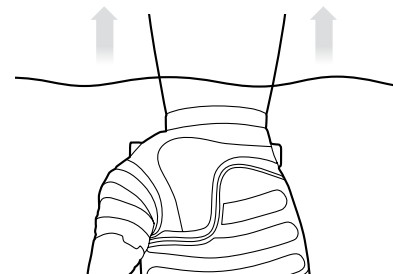
Your TASKA Hand has a waterproof rating of IP67 due to its HydroSeal™ waterproofing technology. Check with your clinician whether your wrist connection includes this technology*.

If your wrist connection is not waterproof, do not immerse it in water above the Wrist Flexion buttons. If it is waterproof, then you may immerse both the wrist and the hand into water to the first opening on the arm socket (see diagrams below).

TASKA Prosthetics is not responsible for the waterproofness of the prosthetic socket that your TASKA Hand will be attached to. Please discuss your socket's waterproofness with your clinician.



Safe water immersion point for a Quick Disconnect Wrist that does not have HydroSeal™ waterproofing technology.



Safe water immersion point for a wrist (Low Profile or Quick Disconnect) with HydroSeal™ waterproofing technology.



The outside of the Power Switch is waterproof. However, if water gets into the socket, it may damage the inside of the switch, batteries, or other electronic parts.

Salt water may discolour the metal parts of your TASKA Hand. If salt water gets on the hand during an activity, wash the hand afterwards with fresh water.

Temperature

Your TASKA Hand will function normally within a temperature range of -4°F to 140°F (-20°C to 60°C). Outside this range, the hand might not function correctly.


Never expose the batteries to temperatures above 140°F (60°C) or below 14°F (-10°C). We recommend that you store the batteries between 32°F to 86°F (0°C to 30°C).

Humidity

You may use your TASKA Hand within a humidity range of 15% to 100%.

When you are not using or transporting the hand, you must store it somewhere dry (in a humidity range of 15% to 90%).

Weight

 The maximum weight you may carry with your TASKA Hand or any other prosthetic hand connected to a TASKA wrist is 20kg.

Dirt and dust

Fine dust is not able to get into your TASKA Hand, so you may use it in very dirty and dusty places. However, do not let it come into contact with coarse or rough grit such as sand.

Avoid mud, oils, and other kinds of dirt that could stain or discolour the hand. If you need to use the hand in these environments, you should wear a glove or wash the hand as soon as possible afterwards.

Chemicals

Do not expose your TASKA Hand to corrosive substances such as solvents, acids, alkalis, strong detergents, industrial chemicals, and any substances that are harmful to human skin.

Washing your TASKA Hand

Clean your TASKA Hand regularly only using water, soft soap, or light disinfectant to wash the hand. Harsh chemicals may damage the hand.



Always wash your TASKA Hand after using it in situations that could make it dirty (including salt water). Clean the hand before using it to eat, prepare food, or treat injuries.

Safety precautions when using your TASKA Hand

When using your TASKA Hand:

- ▲ Contact your clinician if something is wrong with your hand.
- ▲ Do not try to repair or modify the hand yourself. Dismantling of your TASKA Hand beyond removal of defined user replaceable components by anyone not authorised by TASKA Prosthetics will invalidate the warranty of your TASKA Hand.
- ▲ Do not expose the hand to hazards that would injure a natural hand, for example:
 - heavy impact
 - rapid vibration
 - explosions
 - corrosive chemicals
 - dangerous machinery.
- ▲ Make sure the hand is turned off before you attach or remove it from the socket.
- ▲ Do not use your TASKA Hand in a way that could cause a safety hazard.
- ▲ Do not rely on the anti-slip feature to prevent losing hold of objects.
- ▲ Do not use your TASKA Hand for holding anything that could cause harm if dropped, such as a heavy or fragile object or container holding a hazardous substance.
- ▲ Do not rely solely on your TASKA Hand to support your weight, or as the primary means to prevent a fall.
- ▲ Do not use your TASKA Hand where a flammable liquid or gas is present.

- ▲ Use your TASKA Hand carefully to avoid injuring people or damaging objects.
- ▲ Use of a prosthetic arm can cause body strain, discomfort or irritate the residual limb. Talk to your clinician if your TASKA Hand is causing pain or discomfort.
- ▲ Keep your TASKA Hand away from naked flames or anything hot enough to burn human skin.
- ▲ Keep your TASKA Hand clear of any live electrical wiring.
- ▲ To prevent unauthorised connections and extend battery life, turn Bluetooth off when not in use.
- ▲ If a serious incident occurs in relation to this device it should be reported to TASKA Prosthetics and the competent authority of the country you live in*.

Software use with your TASKA Hand


Our software allows you to adjust and customise the settings on your TASKA Hand. To download the software, please use the following link:

taskaprosthetics.com/support



Battery care and charging

We have thoroughly tested the TASKA Batteries to make sure they are suitable for safe use with your TASKA Hand.

 Only use a TASKA charger and Power Switch to charge your TASKA Batteries.

Use of any other type of charger could damage the battery, or shorten its life. Any damage or impairment caused to a battery by use of chargers not approved by TASKA is not covered by warranty.

Visit taskaprosthetics.com for a full list of requirements for batteries, chargers, and power systems.

Battery charging


Your TASKA Battery will not lose capacity due to charge memory; regularly recharging the battery when it is only partly discharged will not affect battery life.

Battery charging process

To charge the TASKA Battery:

1. Connect the charger to a wall socket for the Mains Charger, or a vehicle power outlet for the Car Charger which does not exceed 12V.
2. Connect the magnetic tip of the charger's lead to the charging point on the Power Switch in your prosthetic socket.
3. The light on the charger will change from green to red to show that charging is in progress.
4. When charging is complete, the light on the charger will return to green.

New batteries on a full charge will power at least 400 grip actions before grip strength becomes weak. It takes four hours to fully charge the battery from an uncharged state.

 Do not wear your TASKA Hand while charging the batteries. Your TASKA Hand will not work while it is charging.

Battery care

If treated correctly, the TASKA Battery will offer excellent performance. Treating the battery well means:

- charge the battery every night
- charge the battery before storing for long periods
- do not let the battery become completely flat
- replace the battery every 12 months.

Battery warnings

- ▲ Do not expose the battery to naked flames or temperatures above 140°F (60°C).
- ▲ Do not bend, pierce, or damage the case of the battery.
- ▲ Do not change or short circuit the battery wires.
- ▲ If your battery is leaking or you notice fluid on your socket contact your clinician immediately for repair and cleaning.
- ▲ Stop using your hand immediately if you notice that the battery is swollen or unusually hot. Contact your clinician for a replacement battery.

Dispose of batteries according to local regulations.



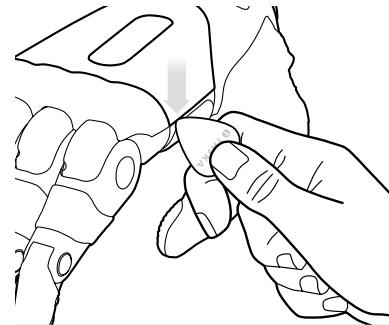
User replaceable parts on your TASKA Hand

The only user replaceable parts are the Top Faceplate and Grip Tips, do not change or modify any other parts of the hand.

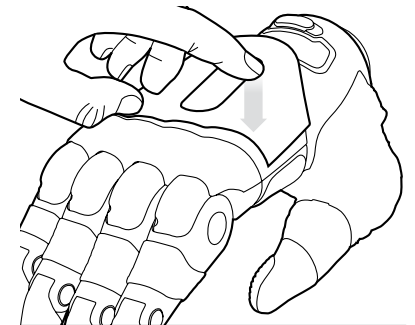
Changing the Top Faceplate

Your clinician may provide you with replacement Top Faceplates and a removal tool. The Removal Tool should be inserted at the point shown in the diagram below to avoid damage.

Once the Top Faceplate has been removed, the new part can be fitted. Position the Top Faceplate along the outside edge of the hand and push down until both sides click into place.



Removing Top Faceplate using the Removal Tool.

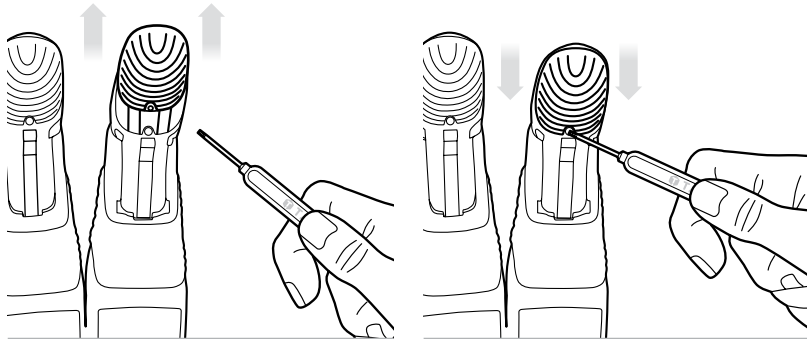


Positioning and attaching new Top Faceplate.

Changing the Grip Tips

Your clinician may provide you with an additional set of Grip Tips and a TASKA Screwdriver. Using the TASKA Screwdriver, remove the screw at the base of the Grip Tip, then slide the rubber Grip Tip upwards away from the hand. To install the new Grip Tip slot the Grip Tip into position, slide down until the holes align and insert the screw, tighten gently.

⚠ Use only the TASKA Screwdriver to change the Grip Tips.
Do not overtighten screws.



Removing Grip Tip using the TASKA Screwdriver.

Positioning and attaching new Grip Tip.




Storage

If your TASKA Hand is not in use, we recommend that it be stored in a dry environment in the protective case provided.

Servicing

During the warranty period you will be contacted annually by your clinician to arrange servicing requirements for your TASKA Hand.

 You must return your TASKA Hand for its annual service in order to maintain the warranty. You may be invoiced for costs that are incurred due to the hand not receiving its annual service.

Product technical information

PRODUCT	DESCRIPTION
TASKA-XXXXXX	Myoelectric controlled prosthetic hand
TASKA-B1G1-1	Pair of rechargeable 7.4v 2000mAh Li-Ion batteries
TASKA-MC-01	Mains-powered 8.4v battery charger
TASKA-CC-01	12v-powered 8.4v battery charger
TASKA-BTA-01	Bluetooth adaptor to connect to PC's USB port
TASKA-PWR-01	Power Switch and charger connection

Compatibility

Sensors

Your TASKA Hand may be controlled by inputs from the following types of sensors:

- EMG (Electromyographic) sensors
- FSR (Force Sensing Resistor) sensors
- Pattern Recognition Sensor Arrays

Visit [taskaprosthetics.com](https://www.taskaprosthetics.com) for more compatibility information.

Compliance

Visit [taskaprosthetics.com](https://www.taskaprosthetics.com) for up-to-date compliance statements.

Troubleshooting guide

PROBLEM	WHAT TO DO
Fault ("!") LED comes on, and the hand stops working	This might mean: a) the hand is too hot inside b) there is water inside the hand. Turn the hand off, leave it for 5 to 10 minutes, then turn it on again.
The fault ("!") light comes on repeatedly and the hand stops working.	Contact your clinician, who will help you identify and fix the problem.
The battery light is flashing even though the batteries were recently charged.	In the first instance, ensure your battery is fully charged. If the battery light continues to flash, contact your clinician.
The thumb does not line up with the index finger during a pincer grip.	<ol style="list-style-type: none"> 1. Perform a fully closed flexi-tool handshake grip and then try the pincer grip again. 2. If still not aligned correctly, turn the hand off and on again, ensuring the fingers are free to move through their full range of motion. 3. If the pincer grip still isn't aligned correctly, contact your clinician for further advice.

PROBLEM	WHAT TO DO
The battery light flashes every 10 seconds.	The batteries have only 10% power remaining. Recharge the batteries as soon as possible.
The hand does not respond to control signals.	<p>Make sure the:</p> <ul style="list-style-type: none"> • hand is turned on • batteries have sufficient charge • charging point is disconnected from a charger • hand is connected properly at the wrist • current grip is not a static grip • EMG disable function is turned off. <p>The connections from the sensor(s) may have become loose. To check if this is the case:</p> <ol style="list-style-type: none"> 1. Turn on the hand while holding down the EMG trigger button. 2. Try to open and close the hand as normal. This should make the light for each sensor flash. If this does not occur, there may be a connection issue. <p>Contact your clinician if the problem continues.</p>

PROBLEM	WHAT TO DO
The battery light stays on and the hand stops working.	The batteries have gone flat and need to be recharged.
The battery charge does not last a full day.	<p>Possible reasons:</p> <ul style="list-style-type: none">• the batteries are not fully charged. A full charge takes four hours• the batteries have been in use for more than one year• the 'anti-slip' feature is on - this uses a lot of battery. Turn off this feature in the app if not required.• the 'close' signal is being used unnecessarily and is using the battery. Once the hand has closed and has a solid grip on an object, cease the 'close' signal• Bluetooth has been left on and is using the battery. Turn off Bluetooth when you do not need it. <p>Contact your clinician if the problem continues.</p>

If you experience any other issues, please contact your clinician for further advice.

