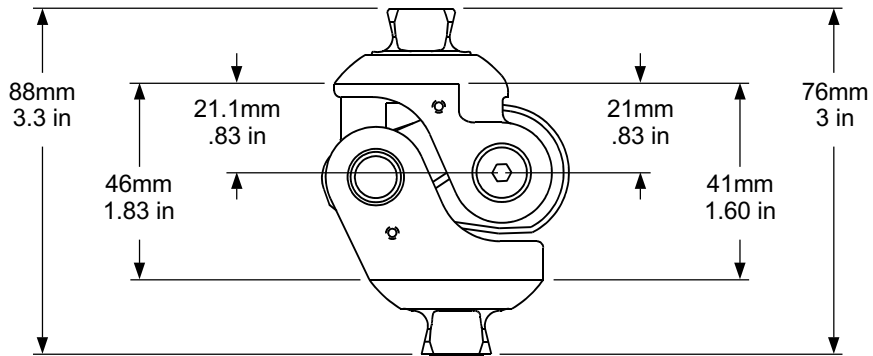


W.A.L.K. Design Parameters



Aluminum

Titanium

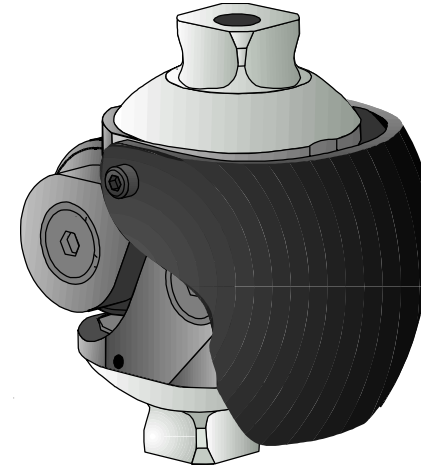
P/N	DESCRIPTION	RATING	WEIGHT
60792	WALK, TITANIUM	300 lbs.	350 g
60783	WALK, ALUMINUM	220 lbs.	316 g
60709	PATELLA		
60825	EXTENSION ASSIST KIT		

Hosmer Dorrance Corporation is in compliance with ISO 9001.

Weight Activated Locking Knee (W.A.L.K.)

Fillauer[®]

2710 Amnicola Hwy
Chattanooga, TN 37406
423-624-0946



FITTING INSTRUCTIONS

Initial Alignment

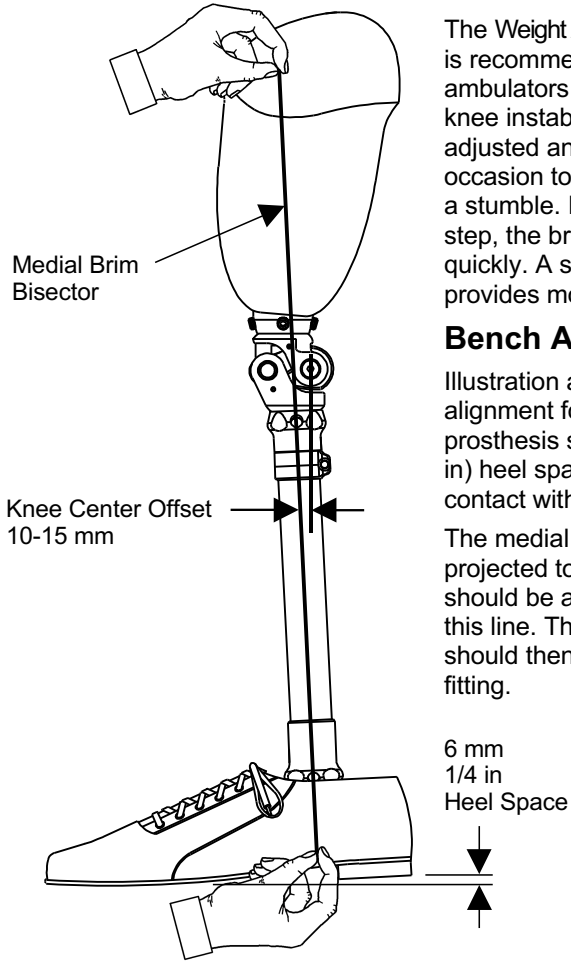
Patient Indications:

The Weight Activated Locking Knee (WALK) is recommended for activity level K2-3 ambulators who experience momentary knee instability. The knee brake should be adjusted and aligned to engage only on occasion to give added support to prevent a stumble. If the brake is used with each step, the braking mechanism will wear out quickly. A stable prosthetic alignment provides most of the inherent gait stability.

Bench Alignment:

Illustration at left depicts suggested bench alignment for the WALK Knee. The prosthesis should be set up with 6mm (1/4 in) heel space and the knee bumper in full contact with the inner braking insert.

The medial brim bisection is found and projected to ankle center. The knee center should be aligned 10-15mm posterior to this line. This stable initial alignment should then be adjusted during dynamic fitting.



W.A.L.K. Instructions

Friction and Braking Sensitivity Adjustments

Tools required: 2.5mm hex wrench
T30 torx wrench

1. FRICTION ADJUSTMENT:
The friction control adjustment is located at the top of the brake. To increase friction, turn screw clockwise to decrease, turn counter-clockwise.

2. BRAKING SENSITIVITY:
Locking Screw must be loosened maximum 1/2 turn before sensitivity adjustment can be made. The stabilizing sensitivity adjustment is located on the **anterior** side of the base of the knee. Maximum sensitivity is achieved by turning the adjustment screw clockwise until the fulcrum comes to a firm stop. To decrease sensitivity, turn screw counter-clockwise. Adjustment is preset at six turns from maximum. Total adjustment travel is approximately 12 full turns.

3. LOCKING SCREW
After adjusting the Sensitivity, tighten the Locking Screw on the posterior face of the Base.

DISASSEMBLY VOIDS WARRANTY

Adjustments

